

SunTrust Financial Centre

401 E Jackson Street Tampa FL 33602

September 2010

1,936 to 40,000 RSF Available for Lease

Property Features

36-story, prestigious Class A office tower centrally located in Downtown Tampa at Florida Avenue and Jackson Street

On-site, experienced and responsive management team

Energy Star rated resulting in reduced operating expenses

Efficient floorplates with up to 12 corner offices per floor

Covered on-site and adjacent parking

Adjacent to City Hall, the Federal Courthouse and Hillsborough County Center

Within 2 minutes of I-275, I-4 and the Crosstown Expressway

10 minutes from Tampa International Airport

Fiber-optic ready

24/7 security with after-hours card access

Jackson Street Bistro - On-site full service restaurant

La Caffe Nostra - On-site coffee and bakery shop

Building conference center with capacity of up to 60

Fitness center

Full-service banking and ATM

On-site newsstand/Sundry shop

On-site auto detailing and repair

For leasing information contact

Sharon Bragg +1 813 387 1285

Sharon.bragg@am.jll.com

Jones Lang LaSalle Brokerage, Inc.

Licensed Real Estate Broker



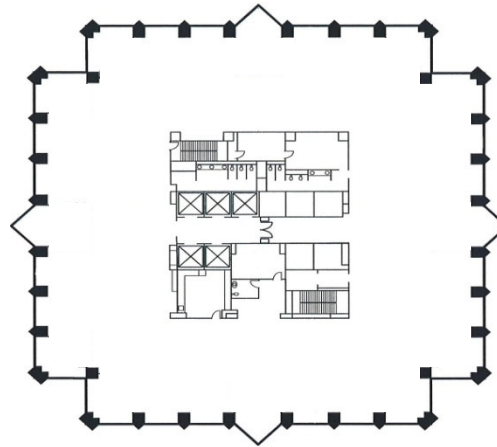
**JONES LANG
LASALLE.**



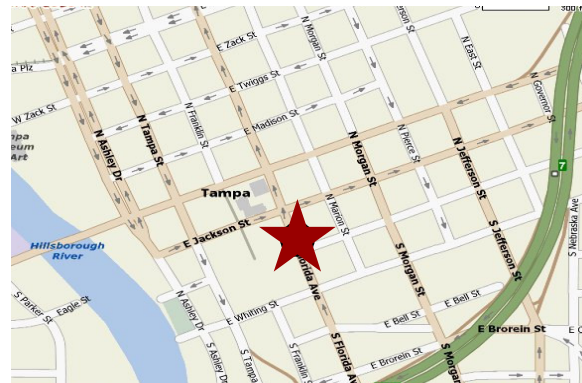
Space Availability

Suite 103	394 RSF	Retail space available now
Suite 1100	19,579 RSF	FULL FLOOR available now
Suite 1500	19,579 RSF	FULL FLOOR available 12/1/10
Suite 1650	3,147 RSF	Available now; move-in condition
Suite 1825	2,491 RSF	Available now
Suite 2320	1,936 RSF	Available now
Suite 2350	2,991 RSF	Available now
Suite 2400	9,893 RSF	Available now
Suite 2450	4,965 RSF	Available now
Suite 2525	5,236 RSF	Available now
Suite 2625	5,833 RSF	Available now
Suite 3000	19,972 RSF	FULL FLOOR available 12/1/10
Suite 3100	19,972 RSF	FULL FLOOR available 12/1/10

Typical Floor-plate



Location Map



For leasing information contact

Sharon Bragg +1 813 387 1285

Sharon.bragg@am.jll.com

Jones Lang LaSalle Brokerage, Inc.

Licensed Real Estate Broker

www.joneslanglasalle.com

Visit us online at:

www.SunTrustFinancialCentre.com